



Mouse anti Retinoblastoma Monoclonal Antibody

Alternative Name(s): retinoblastoma 1; RB

Order Information

- **Description:** Retinoblastoma (RB)
- **Catalogue:** 500-6814
- **Lot:** See label
- **Size:** 100ug/200ul
- **Host:** Mouse
- **Clone:** ABM353
- **Application:** IHC(P), WB
- **Reactivity:** Hu

ANTIGEN PREPARATION

A recombinant protein of human retinoblastoma (Rb).

BACKGROUND

The retinoblastoma (RB), a tumor suppressor protein, is a negative regulator of the cell cycle. This protein stabilizes constitutive heterochromatin to maintain the overall chromatin structure. It can be inactivated by phosphorylation during G1/S stage by one or more cyclin-dependent kinases (CDKs). Different phosphorylation sites of RB may require more than one different CDKs which leads to a differential regulation of downstream effectors' pathways. In the hypophosphorylated state, pRB is active and binds transcription factor E2F1, carries out its role as a tumor suppressor by inhibiting cell cycle progression. Phosphorylation by CDKs inactivates pRB which causes childhood cancer retinoblastoma (RB), bladder cancer, and osteogenic sarcoma. pRB is widely expressed in a variety of human tissues including mammary carcinoma, esophageal cancer, squamous cell carcinoma and cervical cancer.

PURIFICATION

The mouse IgG is purified by Protein A-Affinity Chromatography according to Isotyping

FORMULATION

This affinity purified antibody is supplied in sterile Phosphatebuffered saline (pH7.2) containing antibody stabilizer

SPECIFICITY

This antibody reacts with human Retinoblastoma (RB) . The other species are not tested.

STORAGE

The antibodies are stable for 24 months from date of receipt when stored at -20oC to -70oC. The antibodies can be stored at 2oC-8oC for three month without detectable loss of activity. Avoid repeated freezing-thawing cycles.

APPLICATIONS/SUGGESTED WORKING DILUTIONS*

- Western Blot: 0.1-1 µg/ml
- ELISA: 0.01-0.1 µg/ml
- Immunoprecipitation: 2-5 µg/ml
- IHC: 2-10 µg/ml
- Flow cytometry: Not tested
- Molecular Weight: 110.0
- Positive Control: Kidney Tissue
- Cellular Location: Cell Membrane

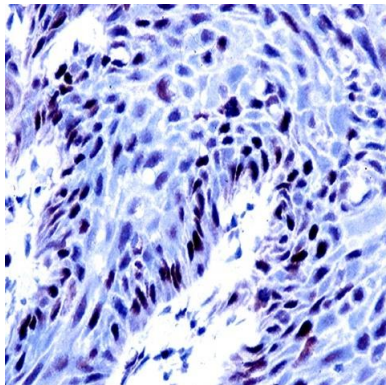
*Optimal dilutions should be determined by researchers for the specific applications.

FOR RESEARCH USE ONLY.

AbboMax, Inc 2528 Qume Drive, Suite 8, San Jose, California 95131, USA
1 408-573-1898 (Tel). 1 408-573-1858 (Fax). www.abbomax.com info@abbomax.com



DATA ATTACHMENTS



Immunohistochemistry: The human Esophageal carcinoma (FFPE) stained by Mouse anti Retinoblastoma monoclonal antibody (Cat#500-6814) at 1:100. (Note: formalin-fixed, paraffin-embedded sections need 15 minutes heat-induced epitope retrieval in 10 mM citrate buffer, pH 6.0, and 30 minutes incubation at room temperature with the primary antibody.

REFERENCES

FOR RESEARCH USE ONLY.

AbboMax, Inc 2528 Qume Drive, Suite 8, San Jose, California 95131, USA
1 408-573-1898 (Tel). 1 408-573-1858 (Fax). www.abbomax.com info@abbomax.com